

# Husborne Crawley Camera Club



9<sup>TH</sup> APRIL 2024

MEETING 5

## Lighting

# April Meeting - Lighting

Lighting is key to any good photograph:

- ▶ Sources of light
- ▶ Controlling the light
- ▶ Studio lighting
- ▶ Gallery

*N.B., I want to keep the presentation section short so that we have more time making practical images*

# April Meeting – Sources of Light

The source and type of light can have a significant impact on the photo you take:

- ▶ Mid-day sun. Hard, point source, deep shadows, high contrast
- ▶ Early morning, late evening, Golden Hour, dramatic shadows, warm light
- ▶ Cloudy sky, soft even light, lacks drama but safe
- ▶ Electric lights, inside and out, generally dim so watch for shake, colour can be very variable, if so, try B&W or just embrace it.
- ▶ On camera flash, hard light, unflattering for portraits, risk of red-eye. Consider a diffuser or bounce off a wall.
- ▶ Studio lights, control over brightness, direction and softness

# Lighting

- ▶ In general, any source of light can be used for photography
- ▶ If the colours are wrong, switch to B&W
- ▶ You don't need studio lights to take good studio shots. Flash guns with diffusers or bounce reflectors work well too.
- ▶ Even a torch or smartphone can be used for fill-in light (under the chin etc.)
- ▶ Most of all experiment!

# Modifying the light

Control the light to get the effect you want:

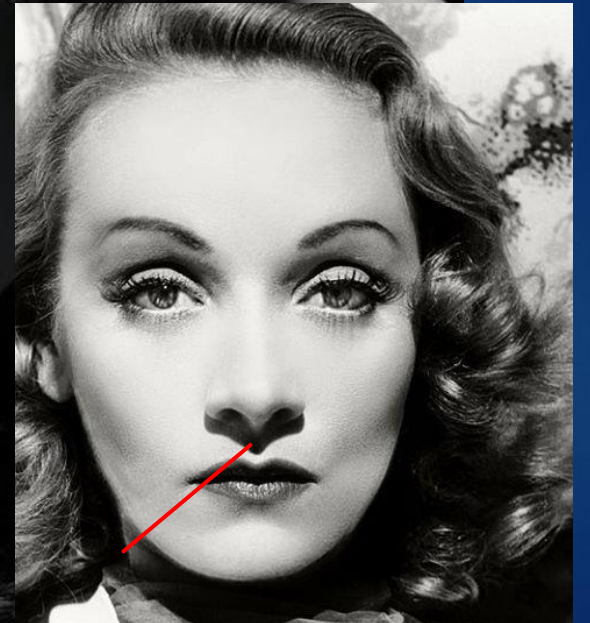
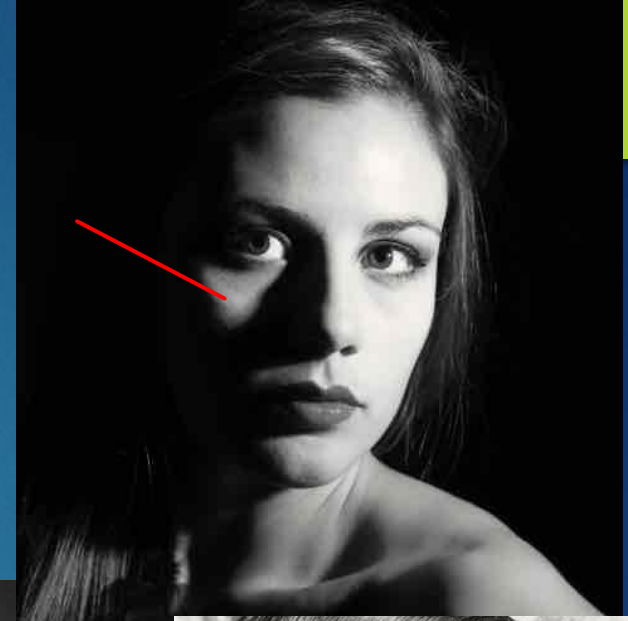
- ▶ Use a reflector to fill in shadows and soften light. A sheet of paper, polystyrene, folding reflector, white umbrella
- ▶ Use a diffuser to soften light. Net curtains, reflected light off a matt wall or ceiling, polythene sheet or propriety flash diffuser.
- ▶ Use a snoot or honeycomb with flash to give very hard, dramatic light.
- ▶ Use a soft box or silver reflector with studio flash
- ▶ Use gel filters to change the colour or temperature of sources.



# Studio Lighting and Portraits

Classic portrait lighting:

- ▶ Rembrandt, triangular highlight
- ▶ Butterfly, symmetrical shadow under the nose.
- ▶ Loop, shadow from the nose curves down towards the lip



# Studio Lighting and Portraits



Short lighting



Broad lighting

# Examples



Even studio light at 45deg



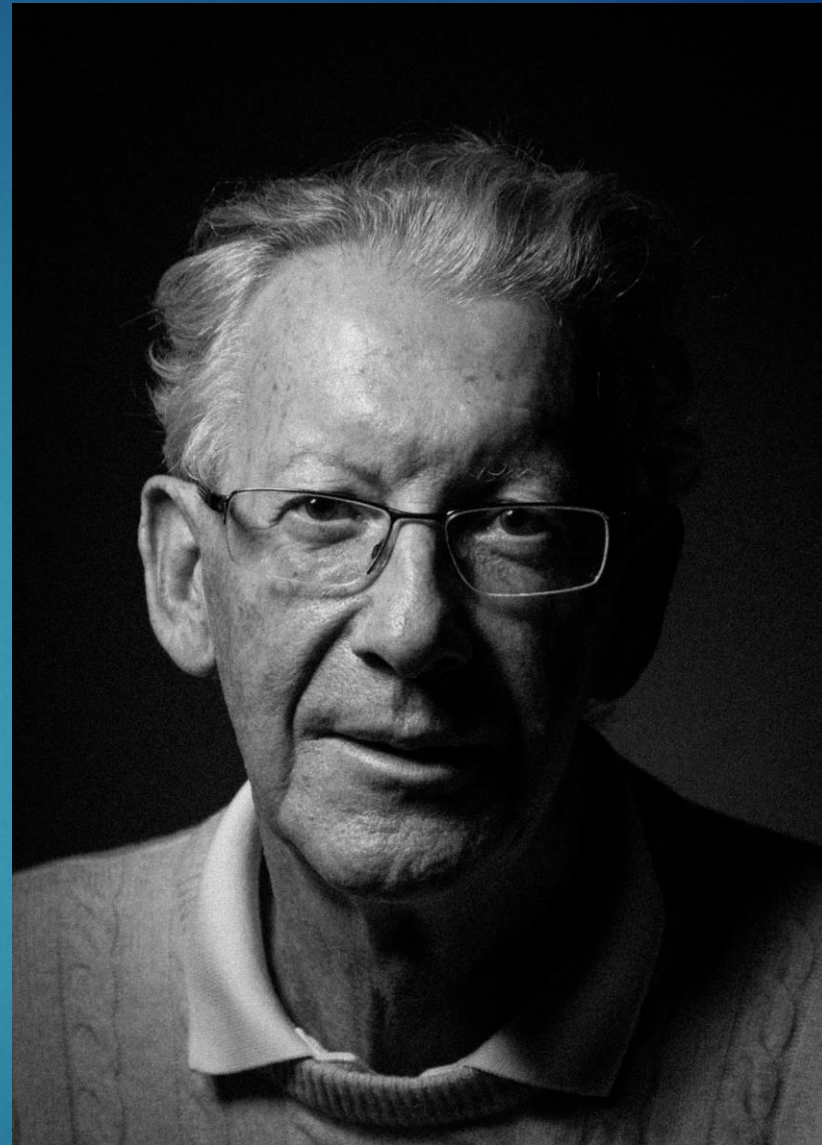
Soft window side light



# Examples



Short soft studio light



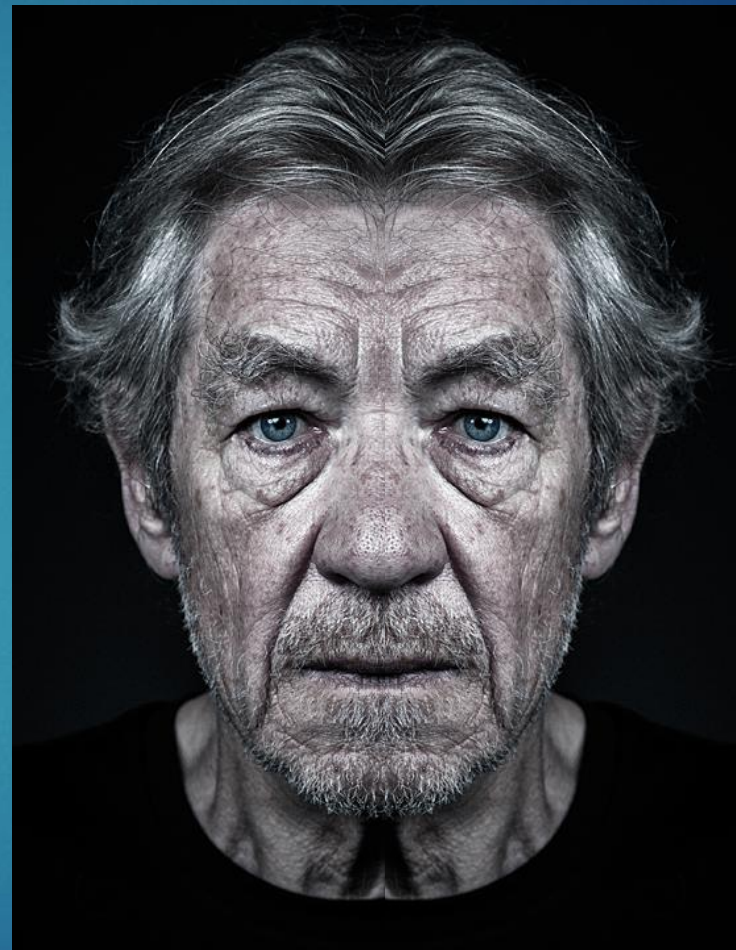
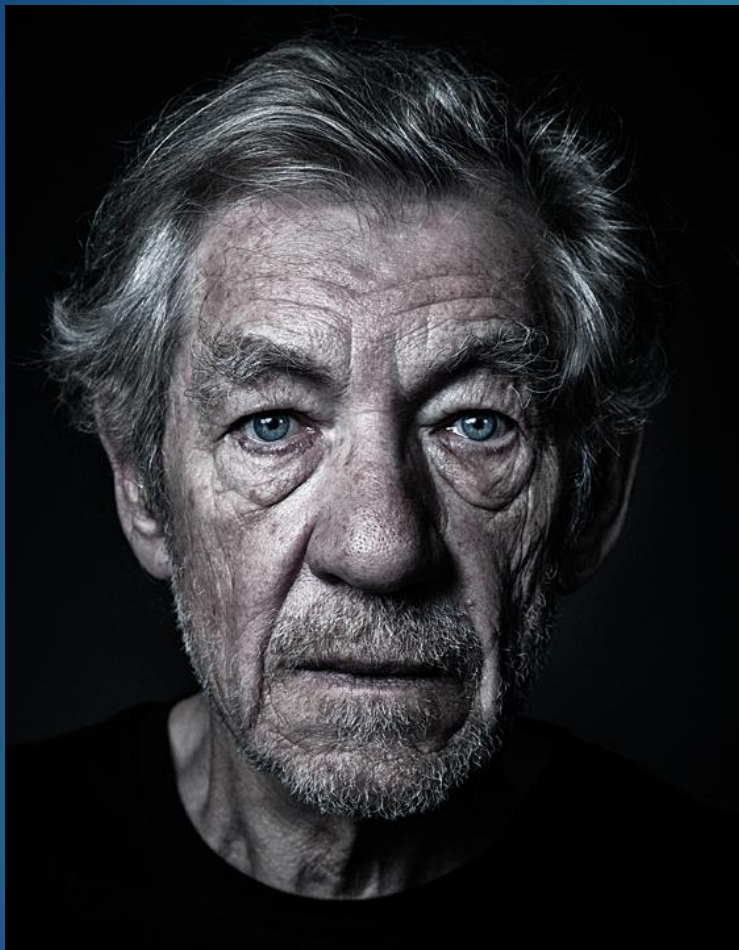
Short hard studio light

Soft Loop light with hair light





# Hey, why the long face?



Make sure you get my best side!



# Time for a break

....and photograph some portraits